



NAUTILUS 2026



NAUTILUS THE ART OF SEASIDE LIVING

EMU interprets contemporary outdoor living through collections designed to deliver outstanding performance, even in high-salinity environments. The use of aluminium and steel treated with dedicated protective cycles ensures reliable resistance to corrosion, weather exposure and the wear typically associated with marine settings. The quality of materials, combined with meticulous manufacturing processes and high-performance finishes, allows the furnishings to preserve stability, comfort and aesthetic balance over time, even under constant exposure to salt air, humidity and UV rays. Conceived to engage naturally with seaside terraces, yacht clubs, exclusive hospitality settings and coastal residences, EMU collections combine formal essentiality, durability and design research, transforming every outdoor space into an elegant, functional environment seamlessly integrated with coastal landscapes.

OUR VALUES FROM THE BEGINNING



EMU, a company at the forefront of technical know-how in the processing and protection of metal, produces both domestic and contract outdoor furniture suitable for different styles, to create authentic and ideal environments to enjoy the outdoors with comfort, conviviality, and relaxation.

With its revolutionary drive and intuition, EMU was among the first companies to establish collaborations with the most famous Italian and international creators and architects, thus introducing design to the outdoor sector.

With its deep commitment to the 100% Made in Italy production philosophy and unwavering faithfulness to the culture of its homeland, the company has an international market distribution over 85 countries.

The continuous exchange of experiences and ideas and a global sales network, combined with inclusive and sustainable ethical choices, have fostered an international mindset focusing on designing not just products, but complete furnishing solutions. With this heritage in our hearts, the company works to seize future opportunities, always inspired by the culture of outdoor living.



OUR ALL-ITALIAN QUALITY

EXPECTING THE BEST IN TERMS OF QUALITY
SEEKING PERFECTION IN EVERY DETAIL ADOPTING
AN INNOVATIVE MENTALITY THESE HAVE ALWAYS
BEEN EMU'S GUIDELINES



The company carries out and monitors all stages of manufacture at its factory in Marsciano in the heart of Umbria, and coordinates all production stages at its other sites, in an integrated network that follows the most modern organisation models.

The indisputable quality of the company's products is the result of a perfect combination of technology and human input, a priceless heritage achieved thanks to people's passion and know-how. And it is precisely this historic know-how in metal processing that ensures the products' long life cycle and excellent resistance against weather conditions.

EMU has always known just how to create an authentic Made-in-Italy outdoor environment by furnishing it with timeless icons of design, allowing people to come together and enjoy comfort, companionship and relaxation.

« The Italian genius has used in the freest and finest way what he has borrowed and has put into it much more than he has obtained from it, being the richest genius, who could give the most. »

Friedrich Nietzsche





SUSTAINABILITY WITH A GREEN HEART

CARE AND CONSIDERATION FOR THE ENVIRONMENT ARE IN THE VERY DNA OF EMU VALUES THAT THE COMPANY HAS HANDED DOWN FROM GENERATION TO GENERATION FATHER TO SON



EMU's dedication to the responsibility starts with our Sustainability Report, ESG Rating, Ethical Code, AEO (Authorized Economic Operator) and ISO 9001 certifications and we are FSC® certified (FSC-C006211). Look for our FSC® certified products.

EMU's dedication to the environment involves the entire life cycle of the product, from the use of 100% recyclable and incombustible materials like steel and aluminum, to waste minimisation and recycling.

The environmental compatibility of the entire EMU range is also guaranteed by its commitment to constantly reducing the use of plastic in packaging, which is increasingly small and made up of recyclable cardboard.

All the materials used for the production pass through a strict selection process certificated teak; powder paints free from VOC (Volatile Organic Compounds) for more even coating, resulting in less product waste. EMU-Tex, a phthalate-free technical fabric for outdoor, used for deckchairs and sunbeds. HPL, used for some tabletops, completely non-toxic and made of 70% renewable sources.



EMU'S KNOW-HOW

EMU MAKES STRIDES IN TECHNOLOGICAL INNOVATION EVERY DAY



Tradition and innovation come together thanks to a constant investment in advanced technology and automation, like robotic systems for welding and finishing and the exclusive EMU-Coat anti-corrosion process.

EMU's know-how also finds expression in its style choices, thanks to its use of mixed materials and beautiful outdoor fabrics. This vision takes shape inside the Design&Simulation Centre, a research hub that aims to boost the development activities of the design department in a space where technicians and designers can find inspiration for the continuous evolution of processes and products.

The company's innate desire to advance towards the future is also fuelled by a fruitful exchange of ideas with young minds, made possible by a collaborative relationship with national and international universities and design centres.

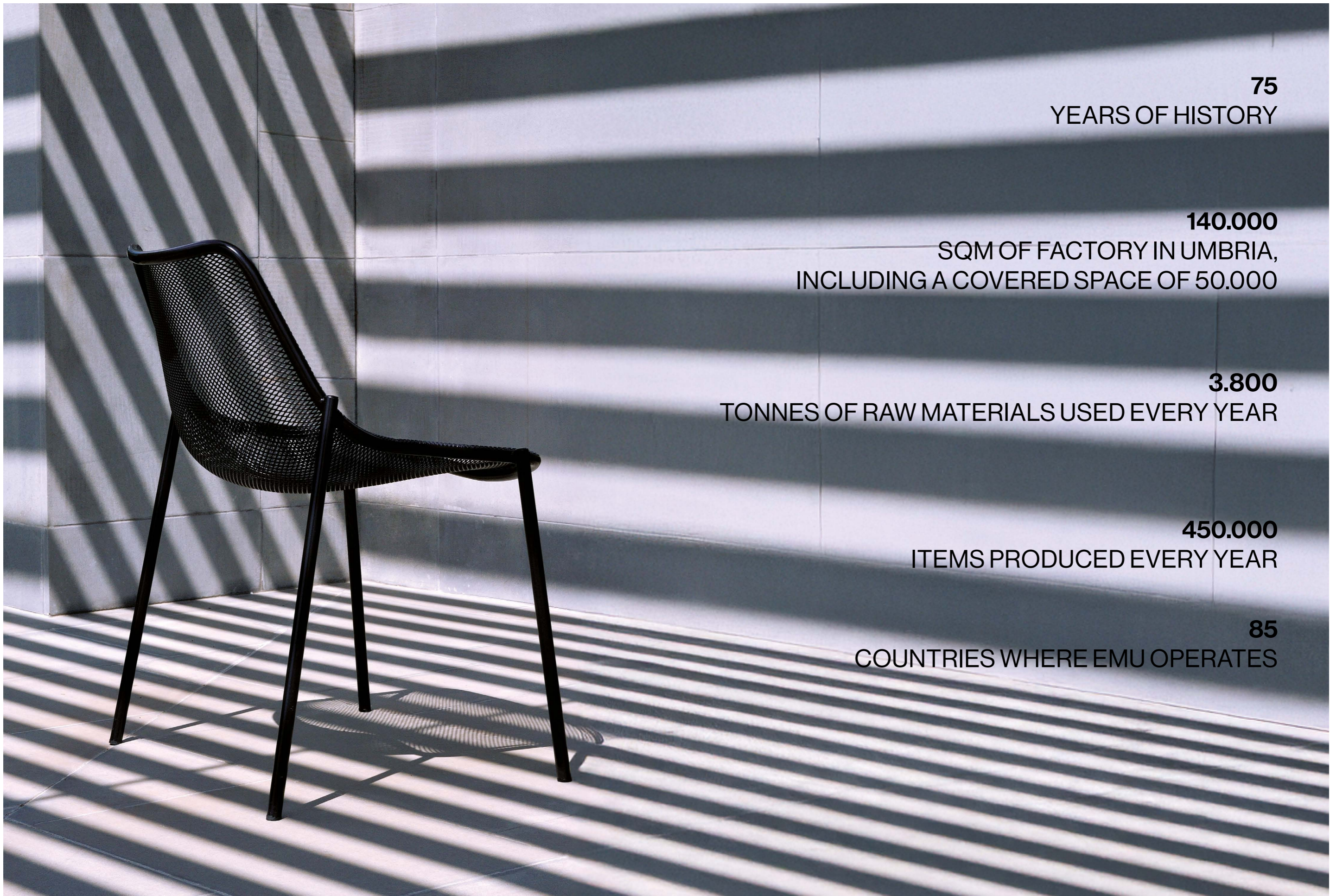


75TH EMU ICONOGRAPHY OF A STYLE A JOURNEY
THROUGH CREATIONS THAT HAVE SHAPED OUTDOOR
SPACES ALL OVER THE WORLD THE ITALIAN ART OF
LIVING IN THE OPEN AIR

In the 75th year since its foundation, EMU celebrates Design as a characteristic feature of its creative and inspirational work. Since the beginning, EMU has redefined the art of living in the open air. A commitment made up of history, tradition, craftsmanship; thanks to the innovation has grown to become a legacy that has shaped outdoor spaces all over the world. Through these collections, we honor the enduring beauty, elegance, and functionality of our furniture, as well as the designers, artisans, and visionaries who have shaped our journey. Not just furnishings, but the creation of indelible memories. We are with you. We are EMU. We think outside.

"Care less about time because our work is timeless".





75
YEARS OF HISTORY

140.000
SQM OF FACTORY IN UMBRIA,
INCLUDING A COVERED SPACE OF 50.000

3.800
TONNES OF RAW MATERIALS USED EVERY YEAR

450.000
ITEMS PRODUCED EVERY YEAR

85
COUNTRIES WHERE EMU OPERATES

COLLECTIONS INDEX

STEEL collections

CABLA 50

ALUMINIUM collections

ANGEL 30
 ANTIGUA 18
 CIAK 98
 HOLLY 110
 NEF 84
 SHINE 74
 STAR 116
 TERRA 68
 TERRAMARE 60
 TIKI 104
 TWINS 38
 YARD 90

ACCESSORIES

OTTOMAN 122
 RED CARPET 126

SUNSHADES

PIAZZETTA 130
 DUCALE 136
 SIGNORIA 142
 NAVONA 148
 TREVÌ 154
 MAGGIORE 160
 NUVOLA 166

DESIGNERS



JEAN NOUVEL



SEBASTIAN HERKNER



PAOLA NAVONE



FEDERICA BIASI



SAMUEL WILKINSON



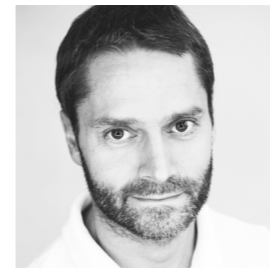
CHIARAMONTE/MARIN



ANDREUCCI & HOISL



LCM MARIN DESIGN STUDIO



MARCO ACERBIS



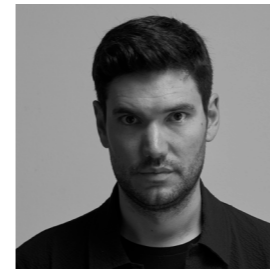
STEFAN DIEZ



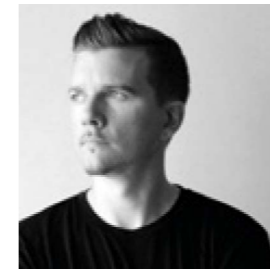
ARIK LEVY



MARTIN DRECHSEL



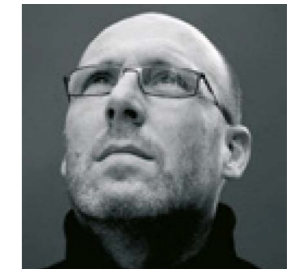
ALESSANDRO STABILE



FLORENT COIRIER



PATRICIA URQUIOLA



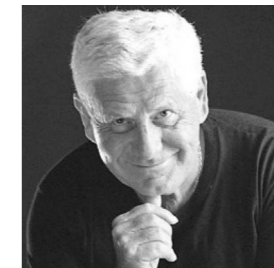
CHRISTOPHE PILLET



LUCIDI/PEVERE



JEAN-MARIE MASSAUD



ALDO CIABATTI



PIO & TITO TOSO



PATRICK NORGUET



CRISTELL/GARGANO



ANGELETTI/RUZA



ANTIGUA

DESIGN BY
FEDERICA BIASI
2026

The inspiration comes from lines and geometries of the sea waves. The Antigua sofa collection combines soft aluminium shapes and light weave patterns creating design solutions that recall a feeling of authenticity and dynamism. The sofa collection shapes and sizes are designed with large and inviting seats evoking a perception of airiness and freedom. The aluminum main structure ensures durability and ease of movement making each element extremely versatile and suitable for different environments. The ergonomic support is guaranteed by many backrest cushions to offer a level of enveloping and modular comfort.



- 18- Antigua 2-Seater Sofas (Art. 1392 color 46-94); Seat and Back Cushions (Art. C/1392 + 2x C/1394 color 600/40); Antigua 3-Seater Sofa (Art. 1393 color 46-94); Seat and Back Cushion (Art. C/1393 + 3x C/1394 color 600/40); Decorative Cushions (Art. C/705 color 600/37, 600/40).
- 20- Antigua 1-Seater Sofa (Art. 1391 color 23-94); Seat and Back Cushion (Art. C/13291, C/1394 color 900/18); Decorative Cushions (Art. C/701 color 600/38).
- 21- Antigua 1-Seater Sofa (Art. 1391 color 23-94); Seat and Back Cushion (Art. C/13291, C/1394 color 900/18); Decorative Cushions (Art. C/701 color 600/38); Cabela Coffee Table (Art. 5047 color 46).





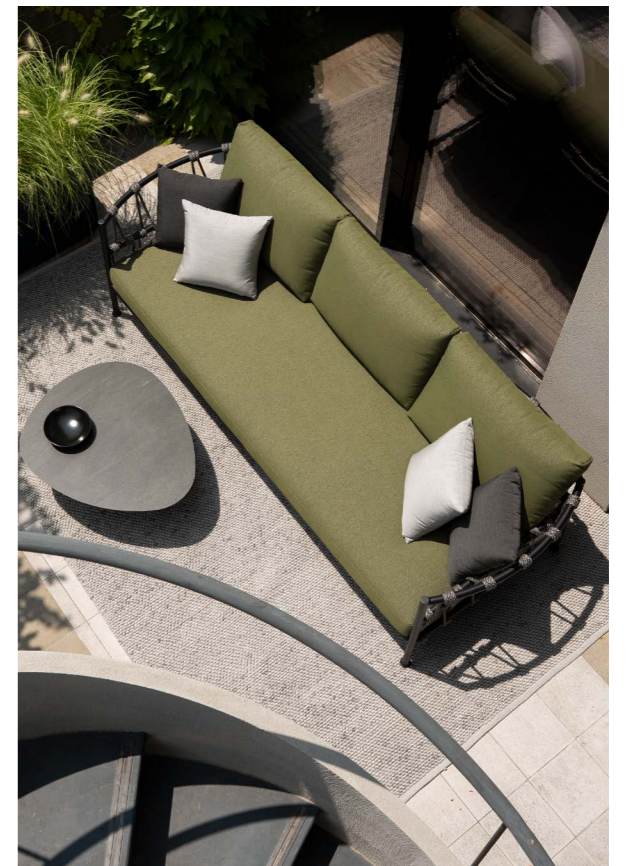
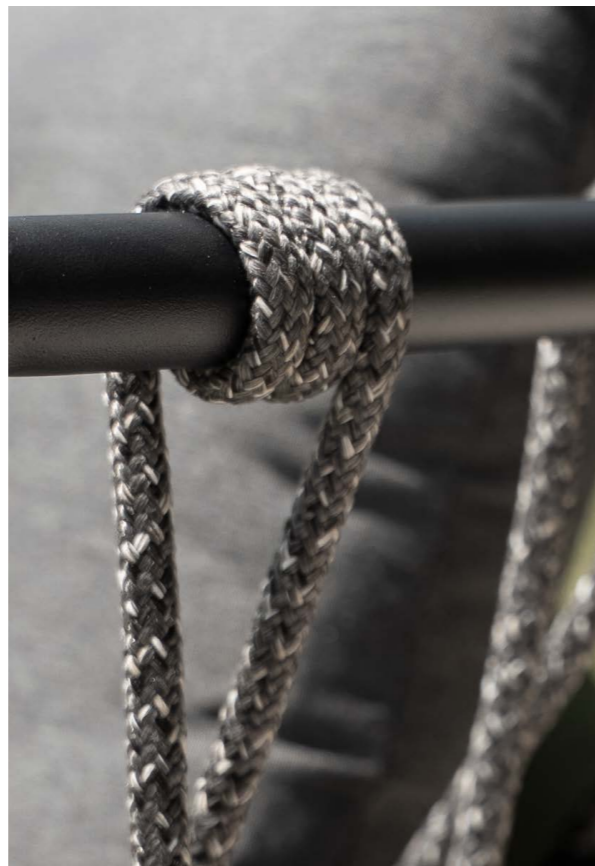
22 - Antigua 3-Seater Sofa (Art. 1393 color 24-92); Seat and Back Cushion (Art. C/1393 + 3x C/1394 color 600/42); Antigua Coffee Tables (Art.1396 color 17); Antigua Coffee Table (Art. 1397 color 24).

23 - Antigua 1-Seater Sofa (Art. 1391 color 23-94); Seat and Back Cushion (Art. C/13291, C/1394 color 900/18); Decorative Cushions (Art. C/701 color 600/32); Antigua Pouf (Art. 1395 color 23); Seat Cushion (Art. C/1395 color 900/18).

24 - Antigua 3-Seater Sofa (Art. 1393 color 24-92); Seat and Back Cushion (Art. C/1393 + 3x C/1394 color 600/42); Decorative Cushions (Art. C/701 color 700/13, 700/34); Terramare Coffee Table (Art. 733+736P color 24-34); Ottoman Rug (Art. 3003 color 900/44).



SINUOUS







ANGEL

DESIGN BY
ANGELETTI/RUZZA
2019

Angel, designed by Angeletti/Ruzza, is a complete collection of dining and lounge chairs with matching cushions, as well as coffee and dining tables in various shapes and sizes that can accommodate up to 8 people. Featuring a soft design with curvy graphics, comfort and an aluminium structure, Angel is the perfect collection for creating convivial atmospheres even at seascides.



30- Angel Lounge Chairs (Art. 9045 color 23); Seat, Back and Armrest Cushions (Art. C/9045 + C/9044 color 900/09); Angel 2-Seater Sofa (Art. 9046 color 23); Seat, Back and Armrest Cushions (Art. C/9046 + C/9044 color 900/09); Coffee Table (Art. 9055 color 23).

32- Angel Lounge Chairs (Art. 9045 color 26); Seat and Back Cushions (Art. C/9045 color 600/39); Decorative Cushions (Art. C/701 color 600/41, 600/47).

33- Angel Armchairs (Art. 9042 color 71); Seat Cushions (Art. C/9042 color 700/13); Angel Rectangular Table (Art. 9053 color 71).



COSY







TWINS

DESIGN BY
SEBASTIAN HERKNER
2023

The Twins collection consists of two twin versions: one entirely made of certified teak, the other characterized by an interesting material mix between teak and aluminium, a perfect synthesis between the designer's experience and EMU's know-how. A collection made up of seats, tables and sofas, which overcomes the boundaries between outdoor and indoor. Its uniqueness makes possible the most varied combinations not only between the two versions but also with other EMU collections.



38- Twins 1-Seater Alu/Teak Sofa (Art. 6045 color 23-82); Seat and Back Cushions (Art. C/6055 color 900/02); Decorative Cushion (Art. 706 color 900/16); Twins 2-Seater Alu/Teak Sofa (Art. 6046 color 23-82); Seat and Back Cushions (Art. C/6056 + 2x C/6057 color 900/02); Twins Teak Coffee Table (Art. 6060 color 82); Decorative Cushions (Art. C/705 color 900/16; Art. C/705 color 900/16, 600/43); Red Carpet Rug (Art. 3002 color 900/40-900/71).

40- Twins Teak Coffee Table (Art. 6060 color 82); Twins 1-Seater Alu/Teak Sofa (Art. 6045 color 23-82); Seat and Back Cushions (Art. C/6055 color 900/02); Decorative Cushion (Art. 706 color 900/16, 600/43).

41- Twins 4 Seats Square Table (Art. 6061 color 82); Twins Teak Chair (Art. 6051 color 82); Twins Teak Armchairs (Art. 6052 color 82); Twins Seat Cushion (Art. C/6051 color 900/09); Twins Seat and Back Cushion (Art. C/6052 color 900/09); Twins Alu/Teak Chair (Art. 6040 color 37-82); Twins Teak Lounge Chair (Art. 6053 color 82); Twins Seat and Back Cushion (Art. C/6053 color 900/09); Twins Coffee Table (Art. 6060 color 82).





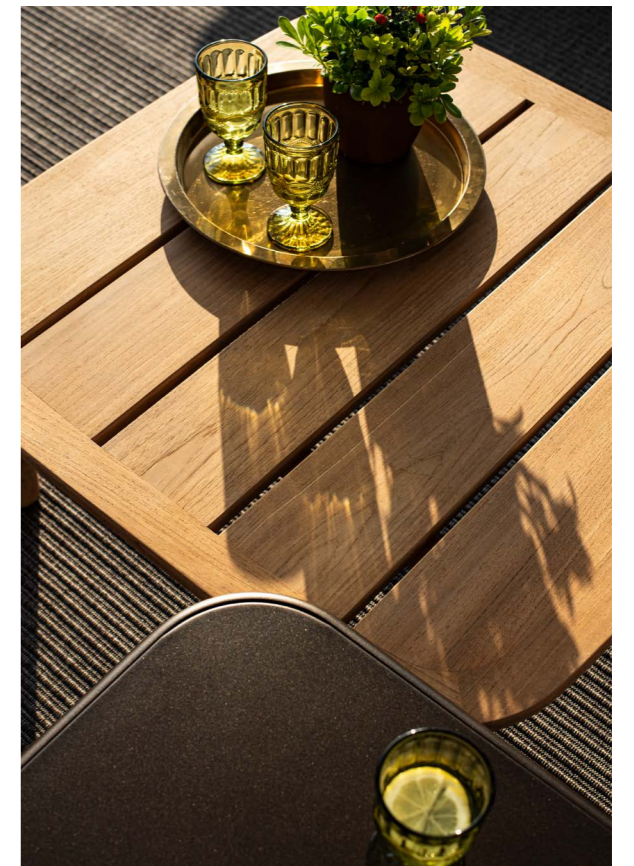


42- Twins 3-Seater Teak Sofa (Art. 6057 color 82); Dx-Sx-Middle Seat and Back Cushions (Art. C/6056, Art. C/6057, Art. C/6047 color 700/34); Decorative Cushions (Art. C/705 color 600/06, Art. C/706 color 900/71); Twins Teak Coffee Table (Art. 6060 color 82); Yard Coffee Table (Art. 507, Art. 509 color 41); Twins 1-Seater Alu/Teak Sofa (Art. 6045 color 41-82); Seat and Back Cushions (Art. C/6055 color 700/13); Twins 2-Seater Teak Sofa (Art. 6056 color 82); Dx-Sx Seat and Back Cushions (Art. C/6056, Art. C/6057 color 700/34); Red Carpet Rug (Art. 3002 color 900/42-900/45).

43- Twins Teak Lounge Chair (Art. 6053 color 82); Twins Teak Coffee Table (Art. 6060 color 82); Twins Seat and Back Cushion (Art. C/6053 color 900/09).

44- Twins 6/8 Seats Rectangular Table (Art. 6062 color 82); Twins Teak Chairs (Art. 6051 color 82); Twins Teak Armchairs (Art. 6052 color 82); Twins Seat Cushions (Art. C/6051 color 900/05); Twins Seat and Back Cushions (Art. C/6052 color 900/05).

SENSORY







CABLA

DESIGN BY
LUCIDI/PEVERE
2024

Cabla, designed by Lucidi/Pevere, is a modular and assembleable upholstered furniture system designed to allow many configurations using just 3 modules: a single linear seat, chaise longue and armrest. The metal core of the stainless steel structure, a product of EMU's longstanding expertise, is combined with the comfort and chromatic variety of the outdoor fabrics, achieving maximum compositional and expressive ductility in a wide range of settings, even for seaside. Wire mesh coffee tables in various shapes and sizes complete the collection, offering many options for hosting get-togethers with family and friends.



50- Cabla 3-Seater Sofa with Daybed (Art. 5036 + 5037 + 5038 + 5039 color 24); Seat, Back and Armrest Cushions (Art. C/5036 + C/5037 + C/5038 + C/5039 color 900/07); Decorative Cushions (Art. C/701 color 600/14, 900/05 + C/706 color 900/18); Cabla Big Coffee Table (Art. 5048 color 24); Cabla Small Coffee Table (Art. 5050 color 24).

52- Cabla Lounge Chair (Art. 5036 + 5038 + 5039 color 26); Seat, Back and Armrest Cushion (Art. C/5036 + C/5038 + C/5039 color 900/05); Cabla Small Coffee Table (Art. 5050 color 24).

53- Cabla 2-Seater sofa (Art. 5036 + 5038 + 5039 color 24); Seat, Back and Armrest Cushion (Art. C/5036 + C/5038 + C/5039 color 900/05); Cabla Lounge Chair (Art. 5036 + 5038 + 5039 color 26); Seat, Back and Armrest Cushion (Art. C/5036 + C/5038 + C/5039 color 900/05); Cabla Big Coffee Tables (Art. 5047 color 26); Cabla Small Coffee Table (Art. 5050 color 24).

54- Cabla Lounge Chair (Art. 5036 + 5038 + 5039 color 17); Seat, Back and Armrest Cushions (Art. C/5036 + C/5038 + C/5039 color 900/09); Cabla 5-Seater Corner Sofa (Art. 5036 + 5038 + 5039 color 23); Seat, Back and Armrests Cushions (Art. C/5036 + C/5038 + C/5039 color 900/09); Cabla Corner Table (Art. 5051 color 23); Cabla Big Coffee Table (Art. 5047 color 17); Cabla Small Coffee Table (Art. 5049 color 23, Art. 5050 color 17); Cone Small Lamp (Art. 2001 color 23); Cone Polyester Dress Code (Art. DC/2001 color 900/99); Cone Big Lamp (Art. 2004 color 17-900/99); Ottoman Rug (Art. 3003 color 900/45).





ELEGANT







TERRAMARE

DESIGN BY
CHIARAMONTE/MARIN
2016

Welcoming shapes and wide dimensions characterise the Terramare collection by Chiaramonte/Marin, a comprehensive range of dining and lounge furniture, coffee tables and sunbeds, as well as dining tables in a variety of shapes and sizes, including square in a small and large version, and rectangular with different dimensions. The perfect collection to stylishly furnish hospitality and private spaces, both indoors and outdoors.

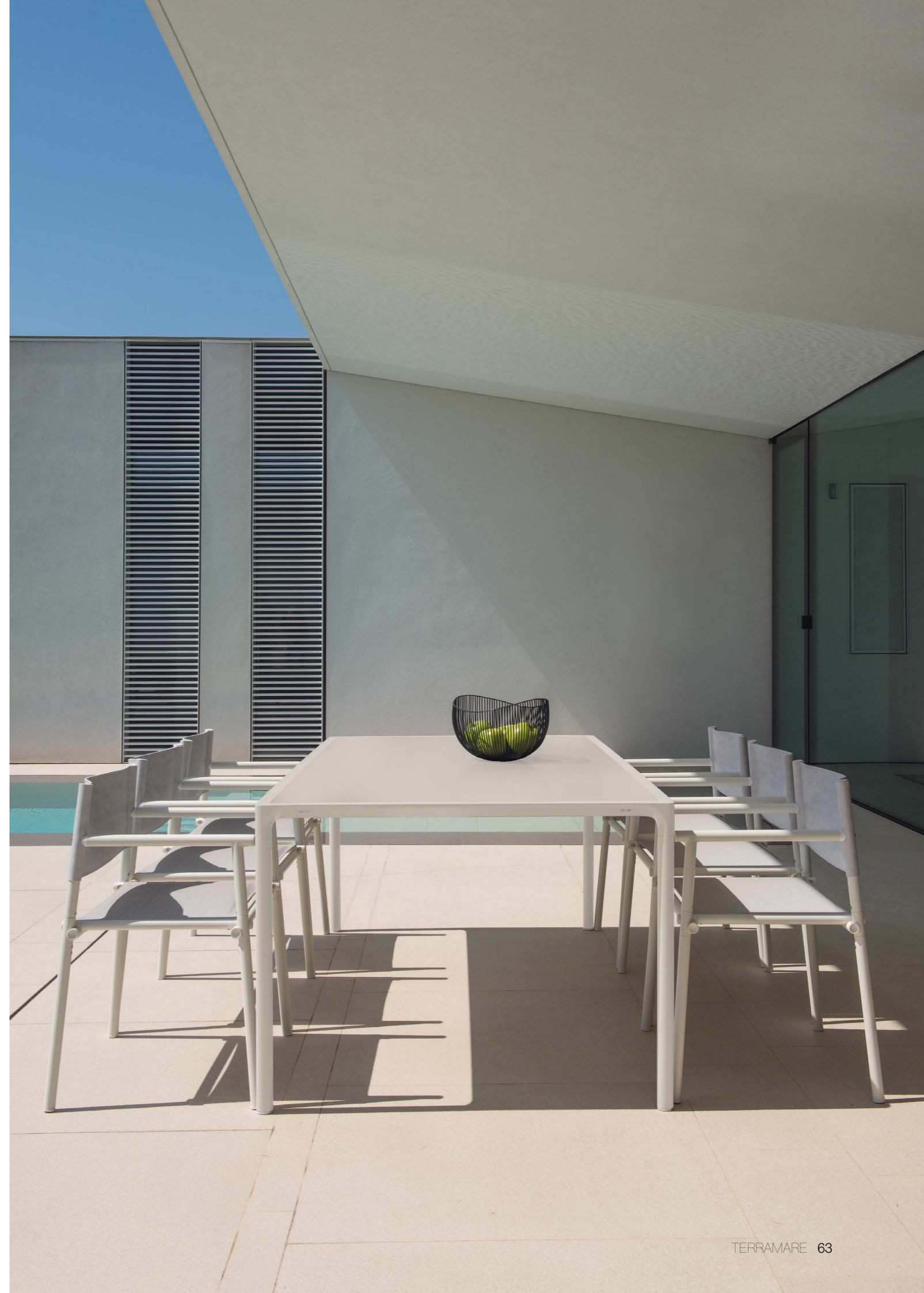


60- Terramare Lounge Chair (Art. 729 color 24-200/95); Seat and Back Cushions of Lounge Chair (Art. C/729 color 700/13); Terramare 3 Seats Sofa (Art. 731 color 24-200/95); Seat and Back Cushions (3x Art. C/729 color 700/13); Terramare Medium Coffee Tables (Art. 733 + 736P color 24-34); Terramare Small Coffee Tables (Art. cod. 732 + 735P color 24-35); Terramare Big Coffee Tables (Art. 733 + 736P color 24-35).

62- Terramare Lounge Chair (Art. 729 color 23-200/92); Seat and Back Cushions of Lounge Chair (Art. C/729 color 900/09); Decorative Cushions (Art. C/701 color 600/45,600/43).

63- Terramare 8 Seats Rectangular Table (Art. 725 color 23-51); Terramare Armchairs (Art. 728 color 23-200/92).

64- Terramare Sunbeds (Art. 727 color 24-300/95).





ENFOLDING





TERRA

DESIGN BY
LCM MARIN DESIGN STUDIO
2023

'I imagined seeing the Earth from a privileged point of view. Terra is a generously sized folding lounge chair, which can migrate from the sea to the land, from the inside to the outside, and vice versa. Design, lightness, sturdiness, and choice of materials are its peculiarities.' Terra is a universal and charming product, as it adapts to any environment and suits to the most varied mix and matches with other EMU collections.



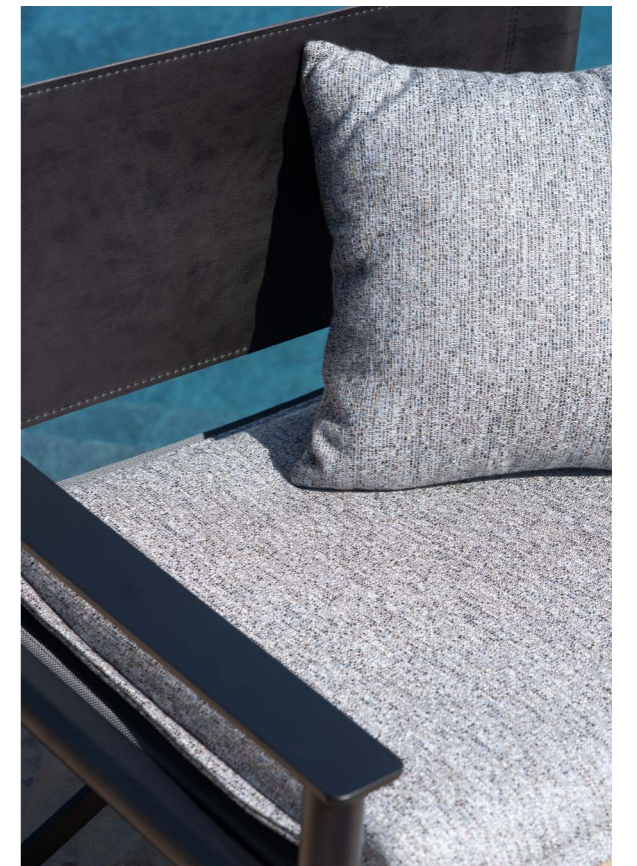
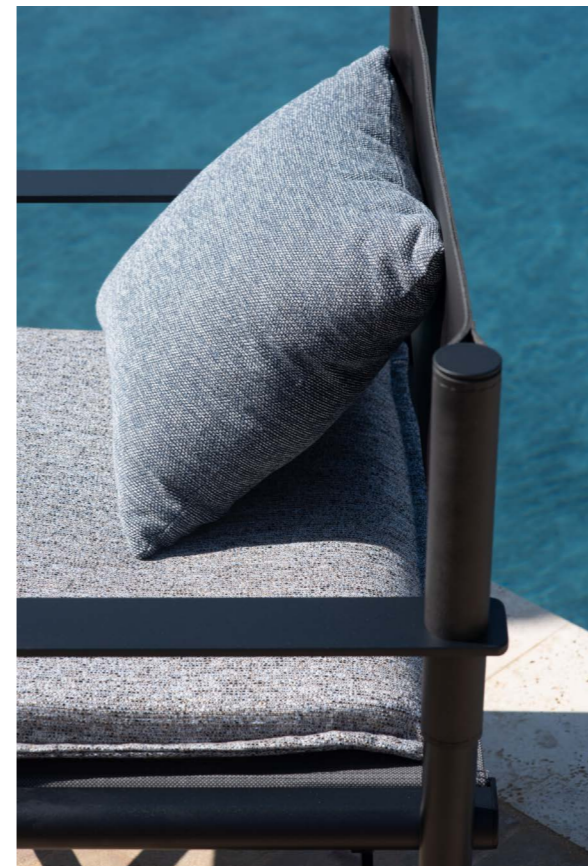
68- Terra Director's Lounge Chairs (Art. 721 Color 24-200/95-300/66); Terra Footstool (Art. 723 color 24-300/66); Terra Seat Cushions (Art. C/721 color 900/05); Terramare Medium Coffee Table (Art. 733 + 736P color 24-36); Terramare Small Coffee Table (Art. 732 + 735 color 24-36).

70- Terra Director's Lounge Chairs (Art. 721 Color 24-200/95-300/66); Terra Footstool (Art. 723 color 24-300/66); Terra Seat Cushions (Art. C/721 color 900/05); Terramare Medium Coffee Table (Art. 733 color 24, Art. 736P color 36); Terramare Small Coffee Table (Art. 732 color 24, Art. 735 color 36).

71- Terramare 2-Seater Sofa (Art. 730 color 24-200/95); Seat and Back Cushions-Sofa (Art. C/729 color 700/34); Terra Director's Lounge Chairs (Art. 721 color 24-200/95-300/66); Seat Cushions (Art. C/721 color 600/36); Decorative Cushions (Art. C/701 color 600/33, 600/36, 700/34); Terramare Medium and Big Coffee Tables (Art. 733 + 736P, 734 + 737P color 24-34); Trevi Sunshade (Art. 995 color 22-21); Patchwall flower boxes (Art. 2042 color 22).



SOPHISTICATED





SHINE

DESIGN BY
ARIK LEVY
2014

A full collection of aluminium and teak furniture, with an understated design. Shine has an innate versatility that makes it perfect for both indoor and outdoor settings. Chairs, armchairs, lounge chairs and stools are available with both aluminium and certified teak seats. The collection is completed by single sunbeds with frames in either aluminium or certified teak, double sunbeds, tables of various sizes, fixed and extensible, suitable for different space requirements and contexts of use.



74 - Shine Armchairs (Art. 248 color 41-82-82); Shine Extensible Table (Art. 296 color 41-82); Shine Lounge Chairs (Art. 249 color 41-82-82); Shine Coffee Table (Art. 252 color 41-82).

76 - Shine Stackable Sunbed with hidden wheels (Art. 6295 color 82-300/67); Shine Sunbed Armrests (Art. 6295B color 82); Shine Sunbed Storage Net (Art. 295R); Signoria Sunshade (Art. 781 color 71-12); Twins Teak Coffee Table (Art. 6060 color 82); Yard Coffee Tables (Art. 509 color 41).

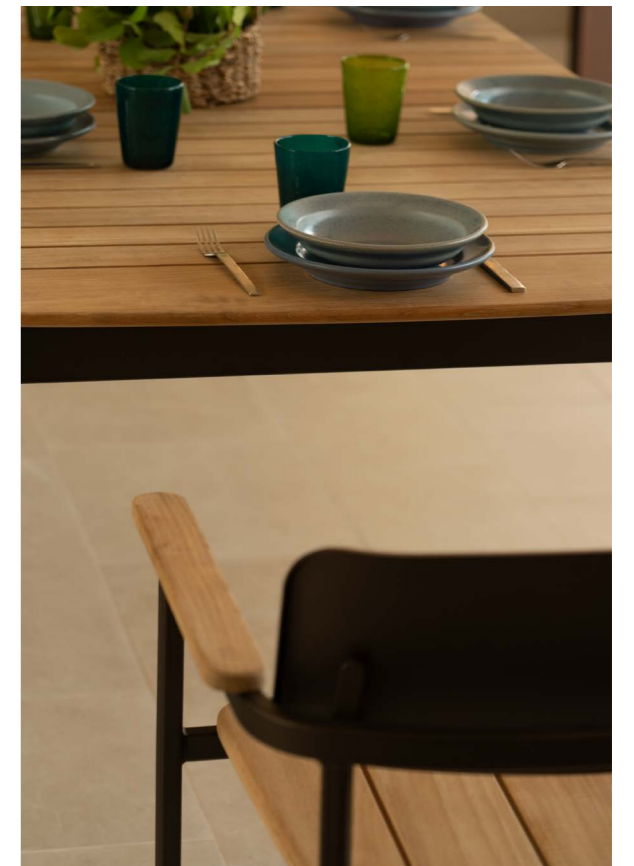
77 - Shine Stackable Sunbed with hidden wheels (Art. 6295 color 82-300/67); Shine Sunbed Roof (Art. 295T color 41-300/67); Shine Sunbed Armrests (Art. 6295B color 82); Shine Sunbed Storage Net (Art. 295R); Cushions (Art. C/295 color 900/75); Twins Teak Coffee Table (Art. 6060 color 82); Yard Coffee Tables (Art. 509 color 41).

78 - Shine Daybed (Art. 289 color 23-300/52); Shine Sunbed Roof (Art. 295T color 23-300/52); Shine Sunbed Armrests (Art. 295B color 82); Shine Sunbed Storage Net (Art. 295R); Shine Lounge Chairs (Art. 249 color 23-82-82); Shine Coffee Table (Art. 252 color 23-82); Yard Coffee Table (Art. 509 color 23); Cone Small Lamp (Art. 2001 color 23); Cone Polyester Dress Code (Art. DC/2001 color 900/99); Cone Floor Lamp (Art. 2007 color 23); Cone Polyester Dress Code (Art. DC/2002 color 900/99).





POLIEDRIC



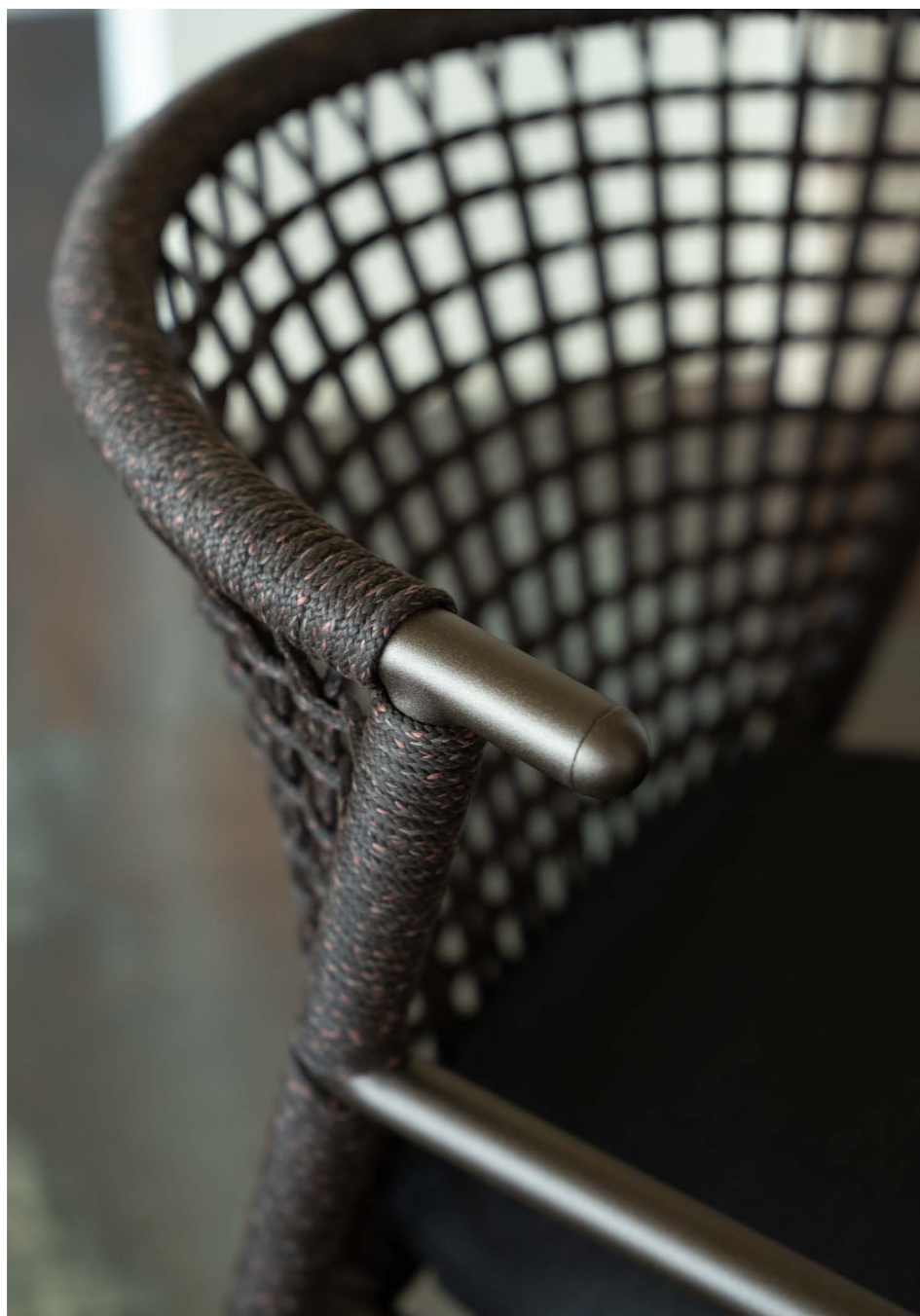




NEF

DESIGN BY
PATRICK NORGUET
2018

The Nef aluminium seat collection, inspired by the graphic design of hot air balloons, combines eclectic style and visual lightness with a solid structure. Ideal for dining settings with a contemporary look & feel, Nef is perfect for informal and experiential contract settings and well suits to spaces where design, materials and colors are carefully mixed.



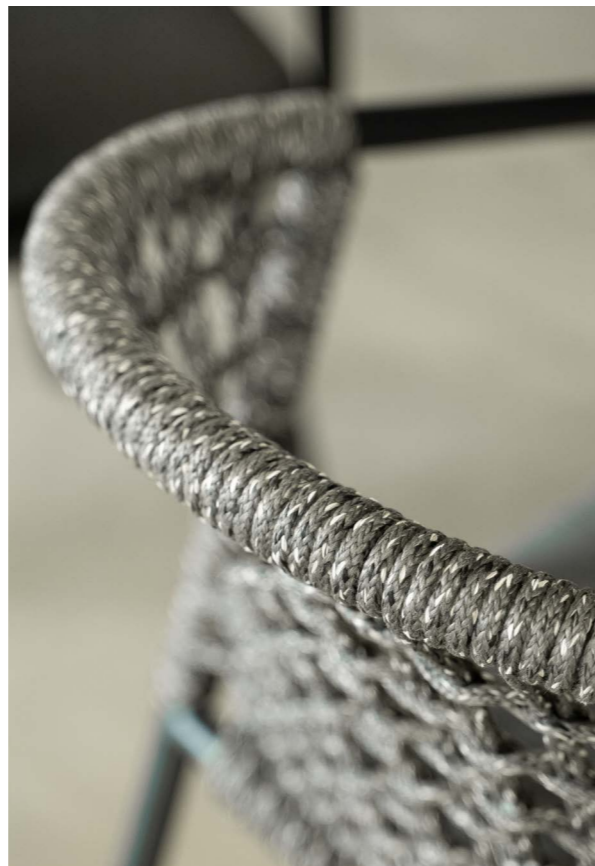
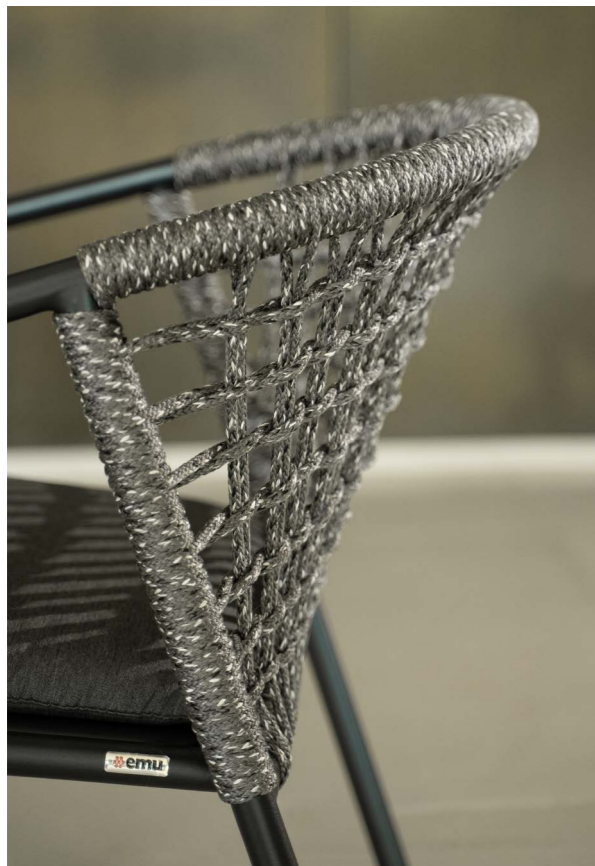
84 - Nef Armchair (Art. 629 color 24-92); Terramare Table (Art. 725 color 24-53); Seat cushion (Art. C/626 color 700/34).

86 - Nef Lounge Chair Short Back (Art. 630 color 41-93); Nef Seat Cushion (Art. C/626 color 900/75).

87 - Nef Lounge Chair Short Back (Art. 630 color 17-92); Terramare Medium Coffee Table (Art. 733 + 736P color 41-36); Nef Seat Cushion (Art. C/626 color 900/77).



HARMONIUS





YARD

DESIGN BY
STEFAN DIEZ
2015

The weave elastic straps, fastened to the sophisticated aluminium frame in an innovative way give life to a collection defined by outstanding, eclectic style and superb comfort, perfectly suitable for outdoor uses. The Yard collection is refreshed with new 100% acrylic straps, which includes 50% recycled fiber, ensuring product longevity and durability. It's available in a new colour range and the system for weave fixing system to the light aluminum frame has been designed in accordance with the product aesthetics.



90- Yard Armchairs and Chair (Art. 501 and Art. 500 color 41-54); Yard Table (Art. 505 color 41).

92- Yard Armchairs (Art. 501 color 23-83); Darwin Table (Art. 878 color 23).

93- Yard Sunbeds (Art. 504 color 23-83); Yard Coffee Table (Art. 509 color 23).

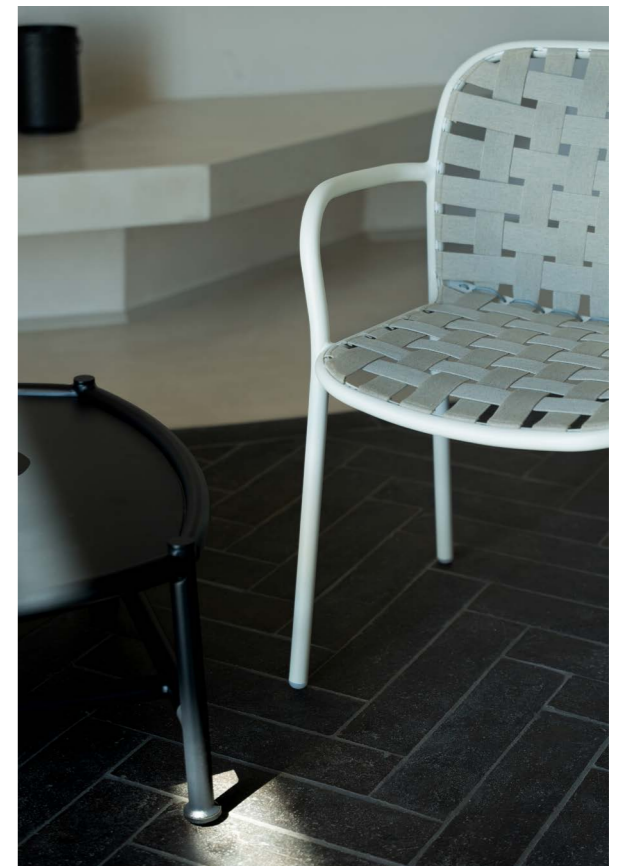
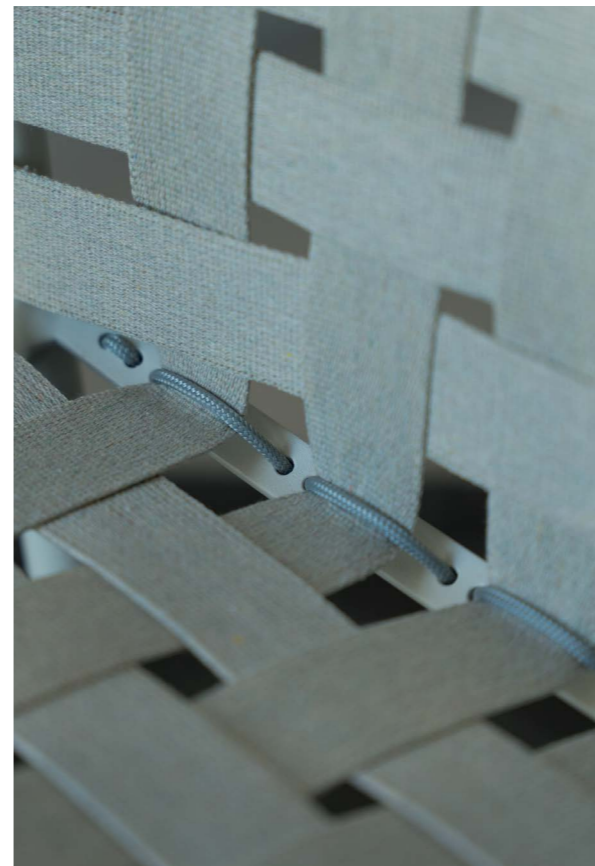
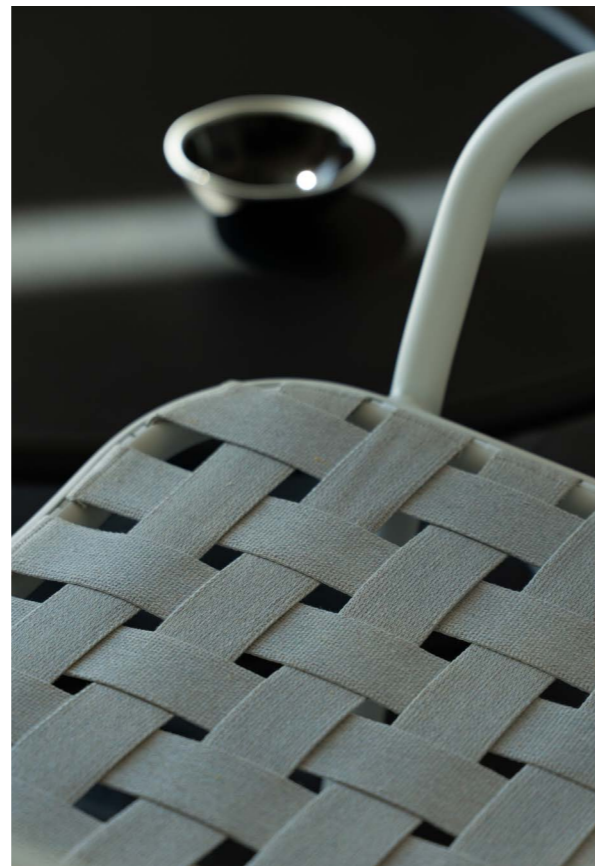
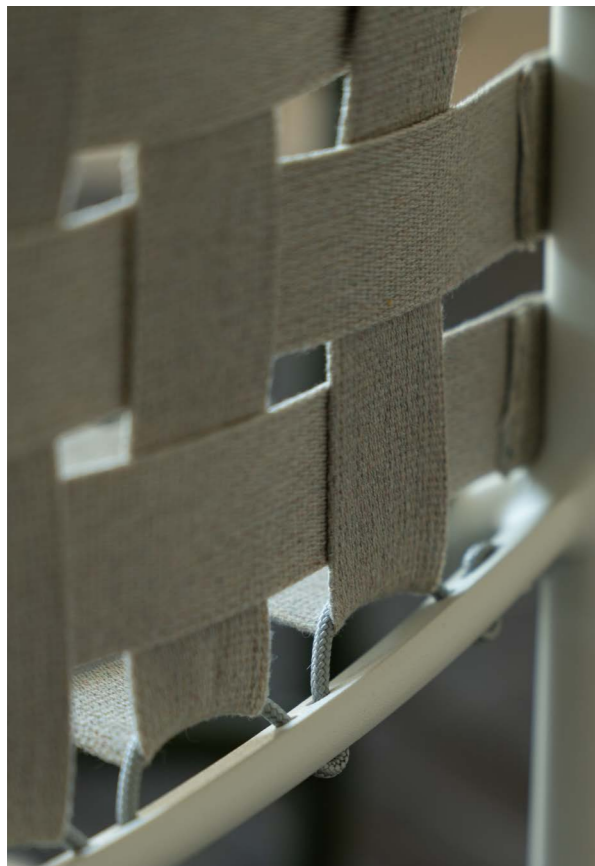




94 - Yard Chairs (Art. 500 color 23-83); Grace Collapsible Table (Art. 285+286 color 37).

95 - Yard Armchairs (Art. 501 color 23 - 83); Antigua Coffee Table (Art. 1397 color 24).

BOLD





CIAK

DESIGN BY
STEFAN DIEZ
2016

Ciak, the contemporary director's chair by Stefan Diez, a perfect mix of function and design. Exploration of form, attention to detail, a blend of aluminium framework and high-performance fabric are its hallmark features. An elegant pouf matches the seats.



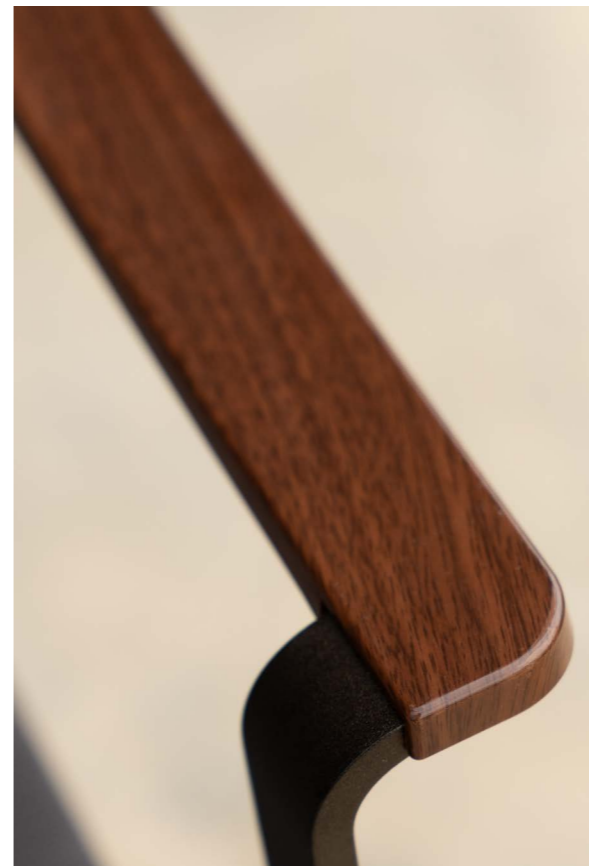
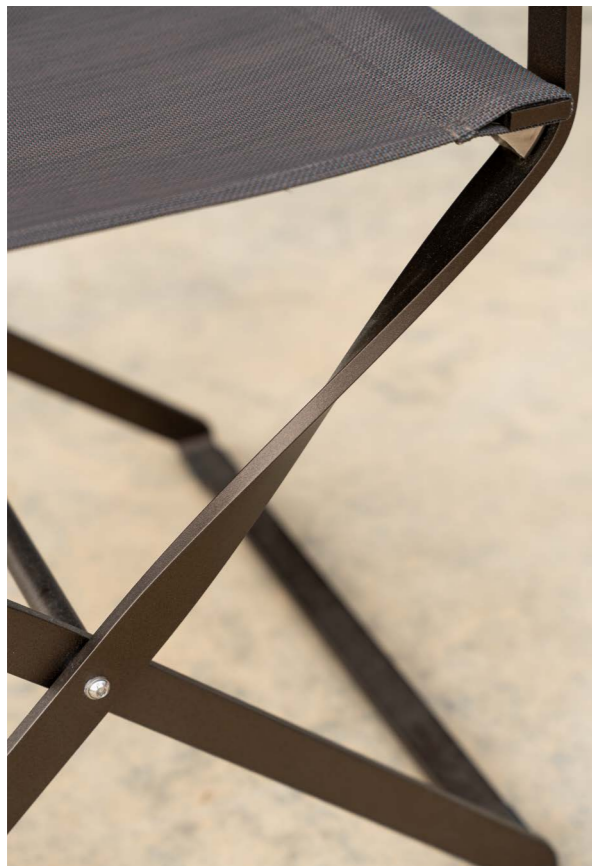
98 - Ciak Director's Chairs (Art. 974 color 41-300/67-41); Terramare 8 Seats Square Table (Art. 724 color 41-53).

100 - Ciak Director's Chairs (Art. 974 color 24-300/95-24, 37-300/66-37, 23-300/52-23, 41-300/67-41); Ciak Pouf/Footstools (Art. 975 color 24-300/95, 23-300/52).

101 - Ciak Director's Chair (Art. 974 color 23-300/52-23); Ciak Pouf/Footstool (Art. 975 color 23-300/52).



UNCONVENTIONAL





TIKI

DESIGN BY
LUCIDI/PEVERE
2011

Tiki is EMU's sunbed with a minimal, essential design and a soft, light silhouette that highlights its beauty and practical uses. This product is highly technical designed and takes full advantage of the disguised mechanisms and easy lock system, so the cloth could be easily replaced.



104 - Tiki Sunbeds (Art. 198 color 37-300/66); Yard Coffee Table (Art. 507 color 37).

106 - Tiki Stackable Sunbed (Art. 198 color 41-300/67); Tiki Armrest (Art. 198B color 41).

107 - Terra Director's Lounge Chair (Art. 721 color 41-200/93-300/67); Terra Footstool (Art. 723 color 41-300/67); Tiki Stackable Sunbed (Art. 198 color 41-300/67); Tiki Armrest (Art. 198B color 41); Tiki Wheels (Art. 198R color 41); Yard Coffee Table (Art. 507 color 41).



CHILL





HOLLY

DESIGN BY
EMU D&SLAB
2012

The Holly collection, made of aluminum and EMU-Tex, is perfect for seaside contexts. Armchair, lounge armchair and foot-stool stand out for their lightness and for their contemporary and harmonious lines.



110 - Holly Reclining Lounge Chairs (Art. 1311 color 71-300/86); Holly Footstools (Art. 1313 color 71-300/86); Holly Armchairs (Art. 1310 color 71-300/86); Shine Table (Art. 299 color 71-82); Holly Sunbeds (Art. 1951 color 71-300/86).

112 - Holly Reclining Lounge Chairs (Art. 1311 color 23-300/52); Holly Footstools (Art. 1313 color 23-300/52); Holly Coffee Table (Art. 196 color 23-300/52).

113 - Holly Armchairs (Art. 1310 color 41-300/67); Nova Table (Art. 859 color 41).



FOLDED





STAR

DESIGN BY
EMU D&SLAB
2012

With its lounge and dining furnishing elements, Star collection is an evergreen among EMU products. Simple shapes, color and versatility mark this collection which is defined by soft, classic lines, ideal in multiple contexts.



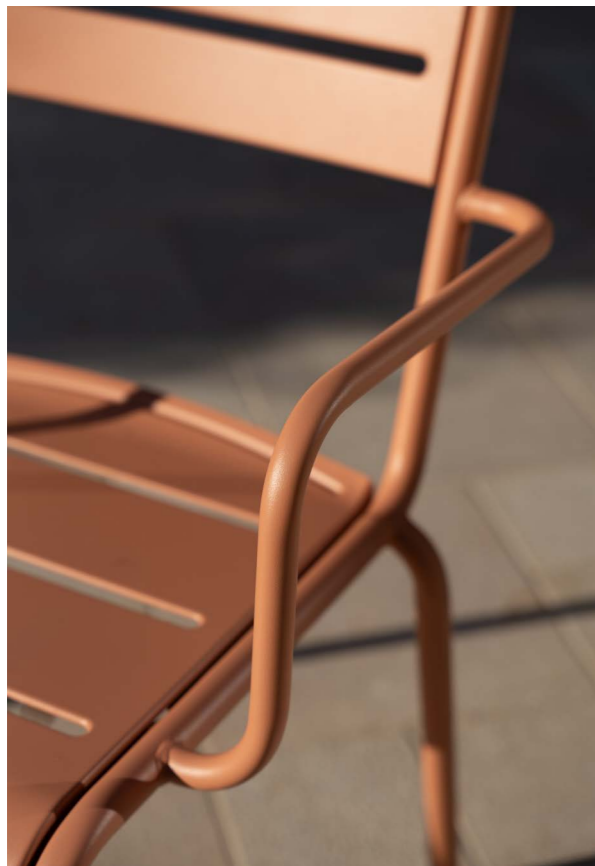
116 - Star Aluminium Chair (Art. 1361 color 13, 16); Star Aluminium Armchair (Art. 1362 color 13); Darwin 2-seats Collapsible Round Table (Art. 848 color 23).

118 - Star Aluminium Chair (Art. 1361 color 16).

119 - Star Aluminium Chair (Art. 1361 color 16); Star Aluminium Armchair (Art. 1362 color 16); Darwin 2-seats Collapsible Round Table (Art. 848 color 23).



DISCREET





OTTOMAN

DESIGN BY
EMU D&SLAB
2023

Ottoman is a collection of handmade, waterproof rugs in polypropylene, specifically designed for outdoor use. The wide range of possible textures and weaves makes the Ottomans ideal for both contract and private uses.

STATELY





RED CARPET

DESIGN BY
EMU D&SLAB
2023

Don't just furnish your outdoors, dress it too: EMU's external carpets, Red Carpet were designed to create stylish, yet practical outdoor areas. Made of strong, weather-resistant, technical polypropylene, this carpet collection recreates the welcoming, elegant mood of your lounge in the garden.

TAILORED





PIAZZETTA

DESIGN BY
CHRISTOPHE PILLET

Designed by Christophe Pillet, Piazzetta is a centre-pole sunshade that stands out due to its quality, durability, and the harmony of its forms. It's the ideal choice for creating quiet, shaded areas of privacy even in smaller spaces, whether contract or residential.



INTIMATE





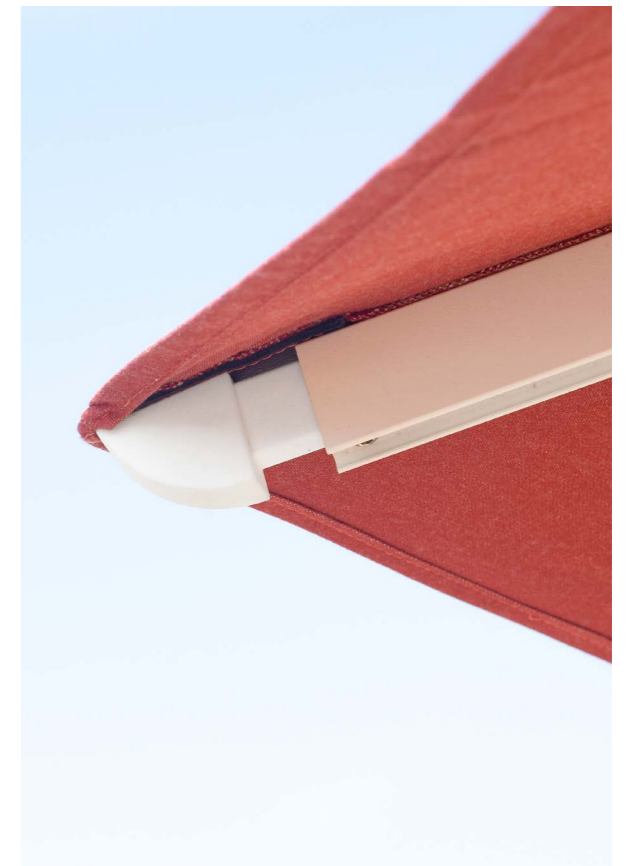
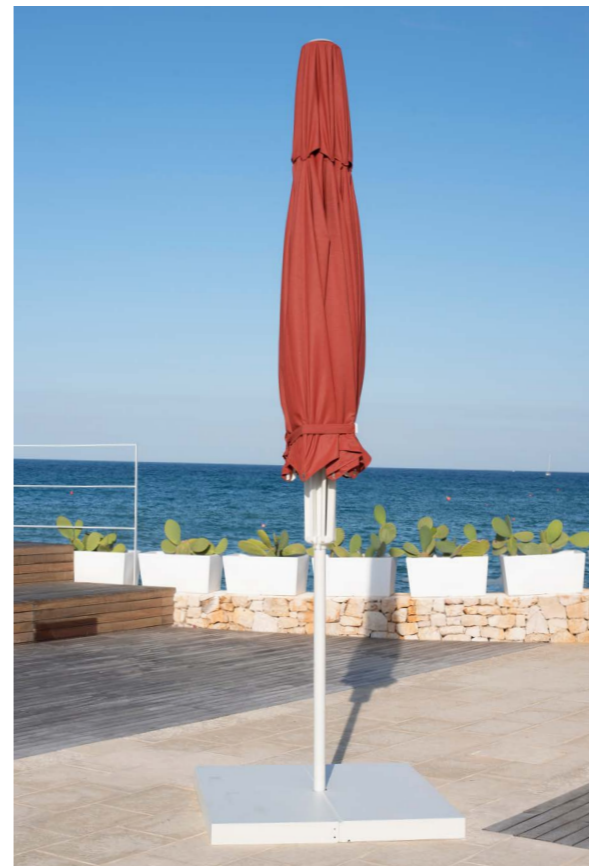
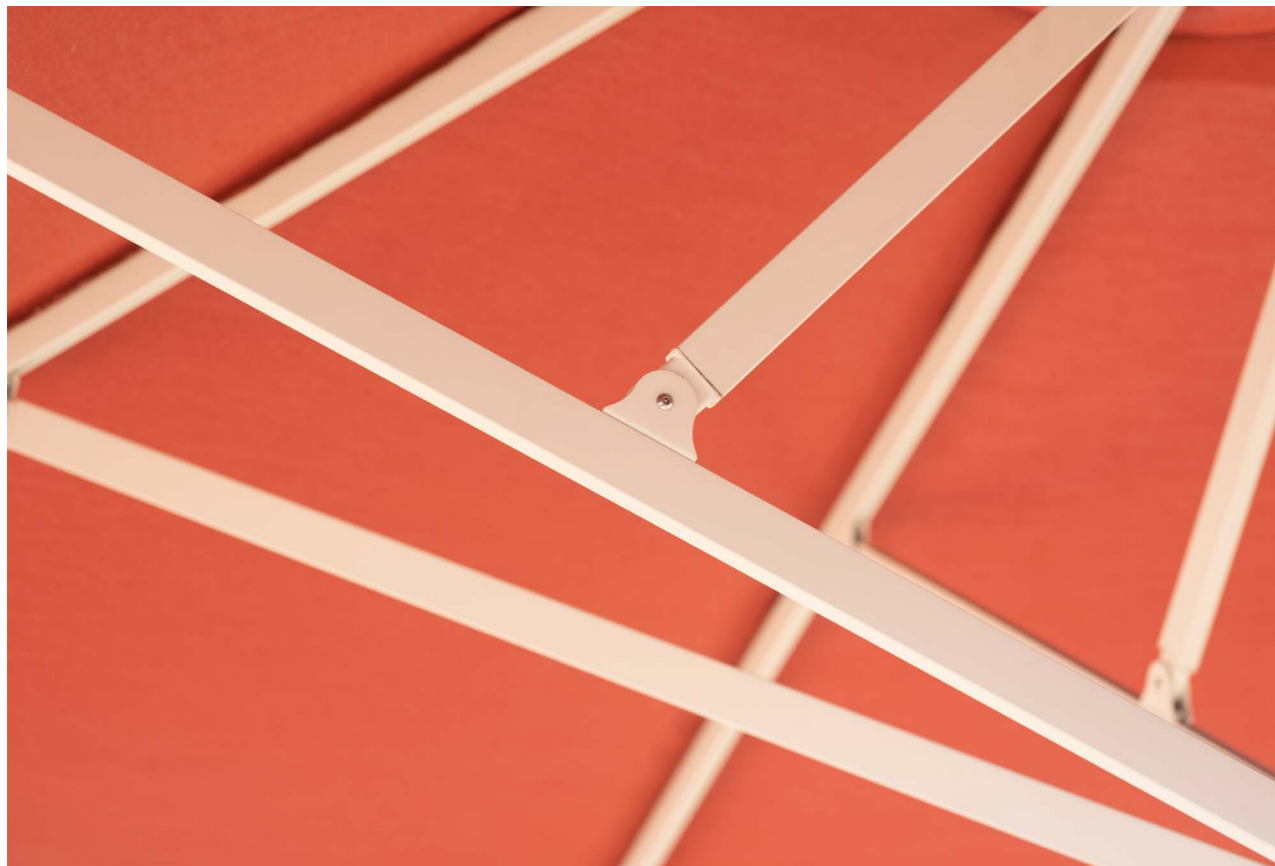
DUCALE

DESIGN BY
EMU D&S LAB

Designed by EMU D&S Lab, Ducale is an intriguing addition to the Shade by EMU range of centre-pole sunshades. The aluminium frame with its 8 ribs guarantees maximum stability, while the convenient telescopic opening of the cloth means that the furniture underneath doesn't need to be moved. The collection is completed by a number of specially designed bases and an easy-to-apply kit of LED lights.



REGAL





SIGNORIA

DESIGN BY
EMU D&S LAB

Designed by EMU D&S Lab, Signoria is a sunshade with a beechwood frame, ideal for creating a classic atmosphere where wood is used as a statement of style. It pairs perfectly with other EMU collections in wood or multi-material combinations. Available in three different sizes, this sunshade stands out for its unique aluminium structural components, ensuring both elegance and durability.



SOLEMN





NAVONA

DESIGN BY
CHRISTOPHE PILLET

Designed by Christophe Pillet, Navona is a collection of side-pole sunshades which can be turned 360° and tilted in three different positions, with an opening mechanism operated by an ergonomic handle. Add-on accessories like curtains for shading, gutters, bases for floor or wall mounting and a centralised lighting system round out its functionality.



VIBRANT





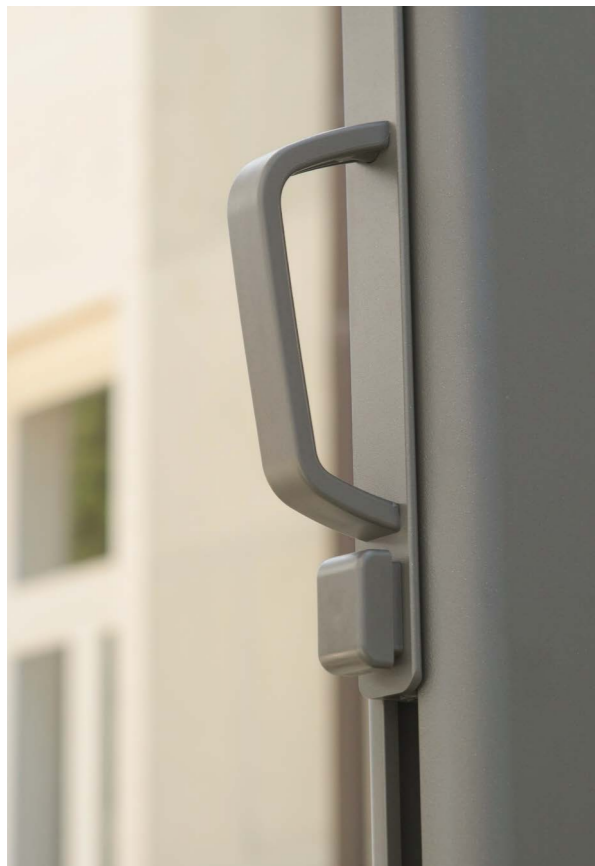
TREVI

DESIGN BY
EMU D&S LAB

Designed by EMU D&S Lab, Trevi can be used in both contract and residential settings to provide welcome shade and privacy. It also makes evenings outdoors even more enjoyable, thanks to the innovative LED lighting system built into the ribs, dimmable and remote-controllable. The convenient telescopic mechanism for opening and closing the sunshade eliminates the need to move furniture and table dressings underneath. Accessories like gutters, curtains for shading, covers and bases for floor or wall mounting round out its functionality.



ICONIC





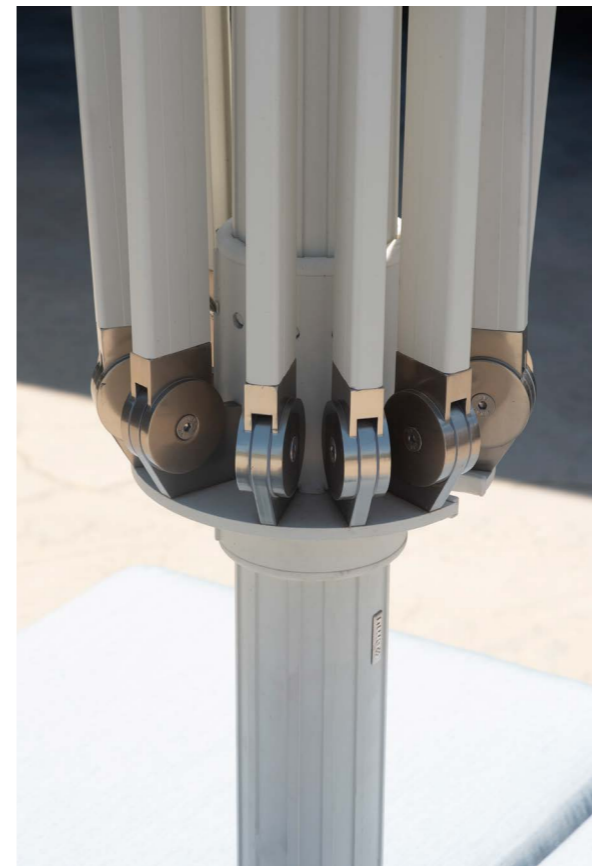
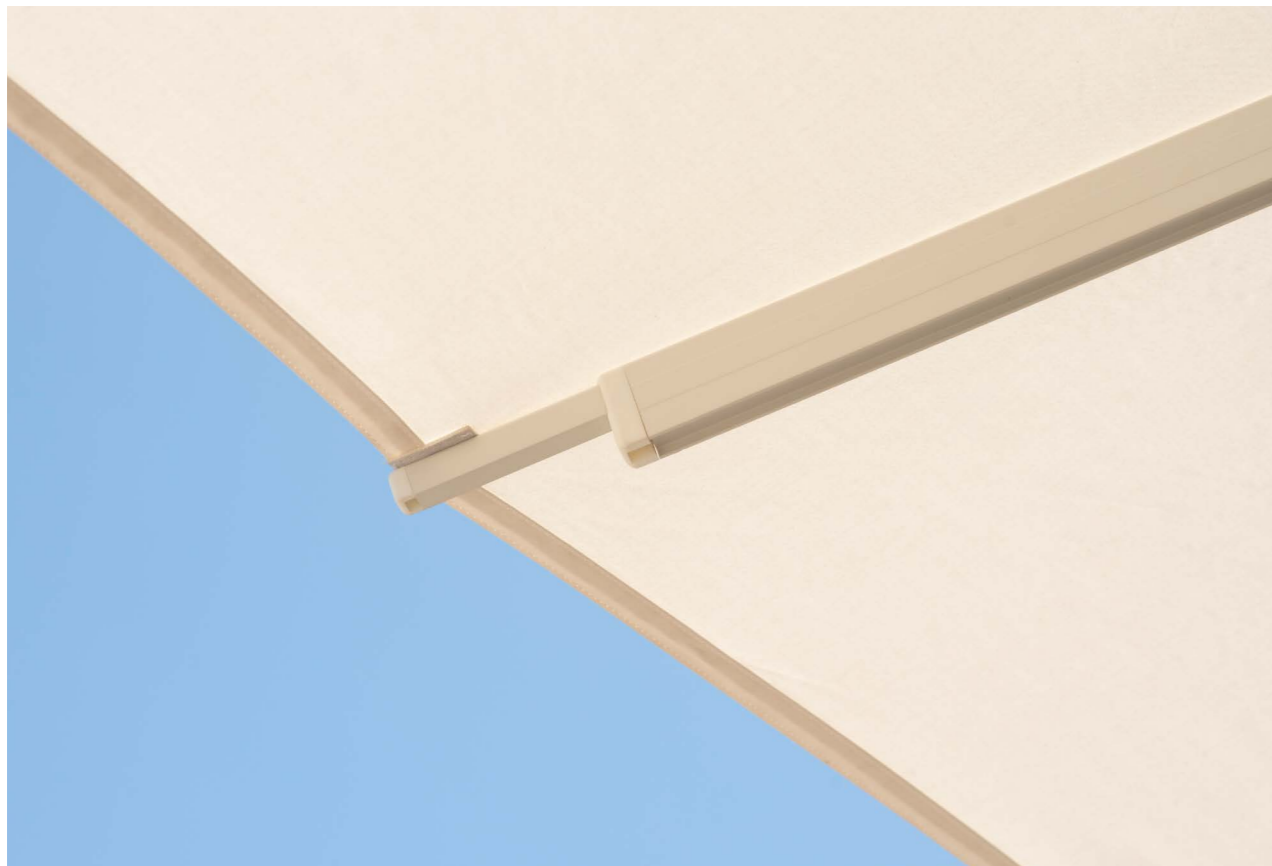
MAGGIORE

DESIGN BY
CHRISTOPHE PILLET

Designed by Christophe Pillet, Maggiore is a maxi-sunshade available in three different sizes: 5x5, 6x6 and Ø7, providing cover for areas of between 25 and 50 square metres. Its large dimensions make it ideal for use in contract settings, where it can accommodate numerous tables and chairs. Moreover, the option of adding a cushion to the base allows it to double as a dining seat. The extremely practical mechanism for opening and closing, the windproof system, and the high-tech aluminium joints make the sunshade both functional and elegant. The collection is completed by accessories such as dimmable LED light kit, gutters, and floor-mounting systems.



GATHERING





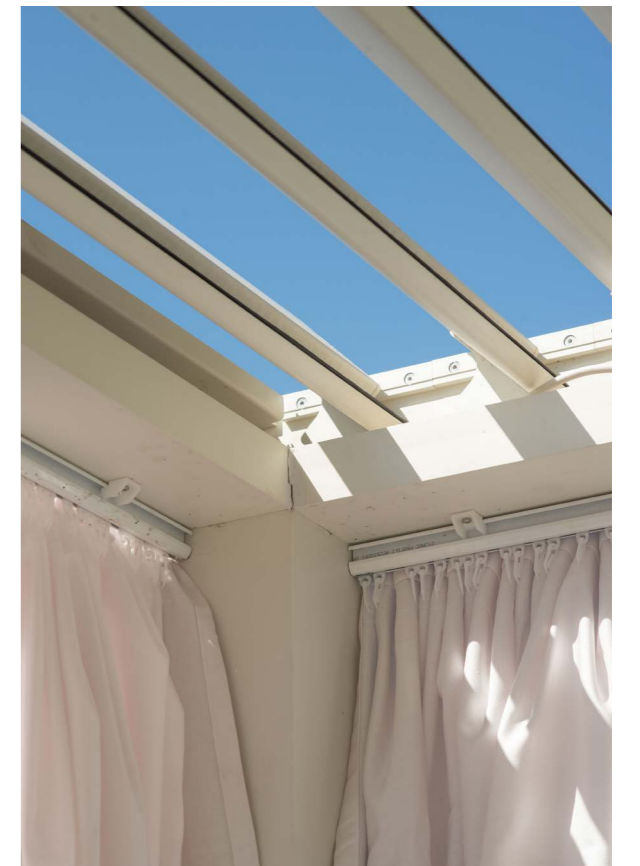
NUVOLA

DESIGN BY
EMU D&S LAB

Designed by EMU D&S Lab, Nuvola is a shading system with a linear and transversal design that defines and furnishes outdoor residential and contract spaces. The directable blades and built-in LED lighting system make it perfect for all use needs and at every time of day. The curtains, which are available as accessories, guarantee complete shade and privacy.



GROUNDED



MATERIALS



- METALS
- SHADING FABRICS
- EMU-TEX
- EMU SYNTHETIC MESH
- ABS
- BELTS
- SYNTHETIC ROPES
- PORCELAIN STONEWARE
- WOODS
- BASIC FABRICS
- STANDARD FABRICS
- EXCLUSIVE FABRICS
- CONTRACT CUSHIONS FABRICS
- RUGS FABRICS
- ECO-LEATHER

METALS

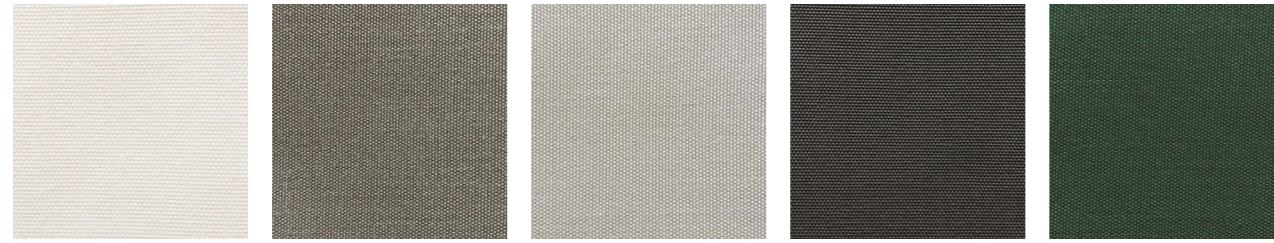
STEEL - Iron and carbon alloy, with carbon content below 2%, treated to withstand the elements with the unique EMU-Coat anticorrosion process.

ALUMINIUM - Aluminium alloys, particularly suitable for cold-working and for die-casting, appropriately treated to withstand the elements and powder coated.

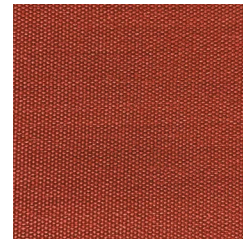


SHADING FABRICS

OLEFINE

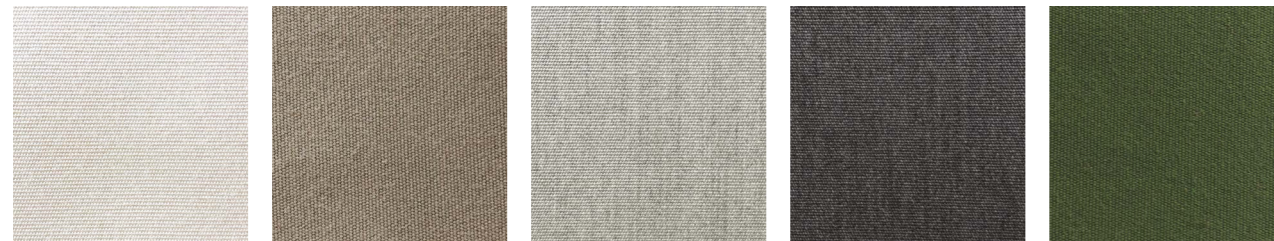


01 WHITE **80** BEIGE **18** LIGHT GREY **43** DARK GREY **90** GREEN

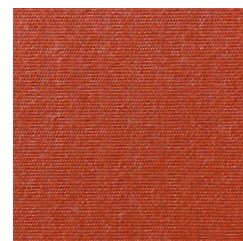


33 BRICK RED

ACRYLIC



81 PRO WHITE **84** PRO BEIGE **21** PRO LIGHT GRAY **38** PRO DARK GRAY **64** PRO GREEN



32 PRO BRICK RED

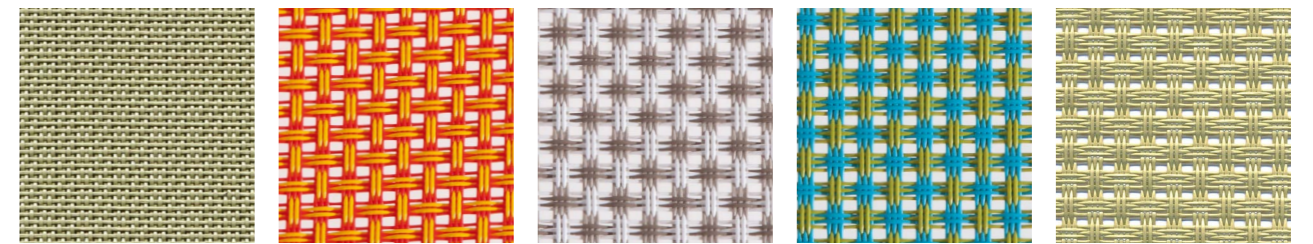
ACRYLIC



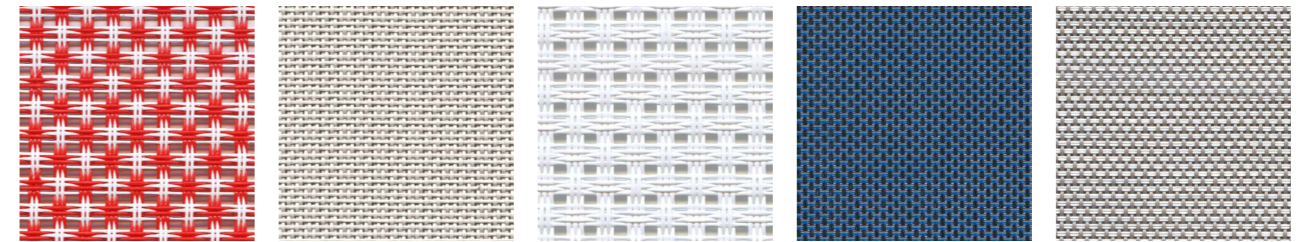
03 WHITE **12** ÉCRU **15** GREIGE

EMU-TEX

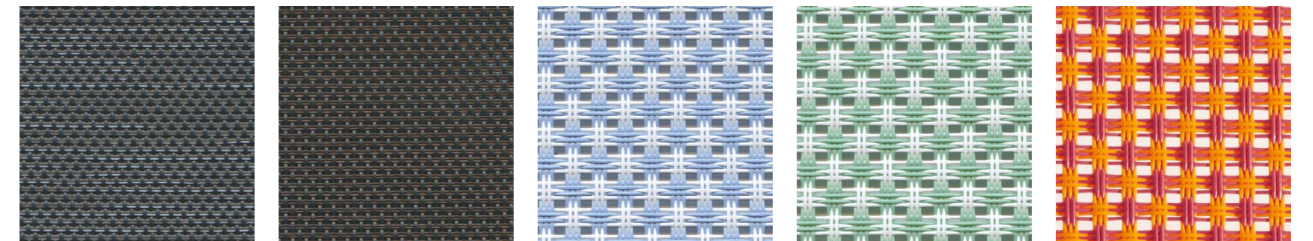
It is a technical fabric for outdoor use made with polyvinyl chloride thread. It features exceptional strength to ensure durability: maximum resistance to UV rays, the elements, humidity and sudden changes in temperature.



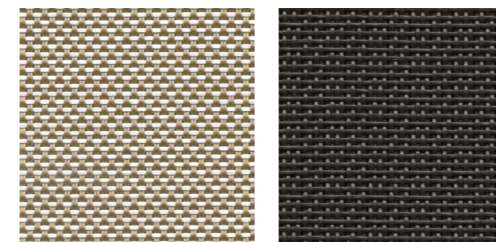
300/05 BEIGE **300/41** PEACH **300/42** ICE **300/43** MINT **300/45** BEIGE



300/46 RED **300/52** WHITE **300/54** WHITE **300/56** OCEAN BLUE **300/65** WHITE / GREY



300/66 STONE **300/67** MOCHA **300/76** SKY BLUE **300/77** LEMONGRASS **300/78** POMEGRANATE



300/86 HAZEL **300/95** BLACK

EMU SYNTETIC MESH

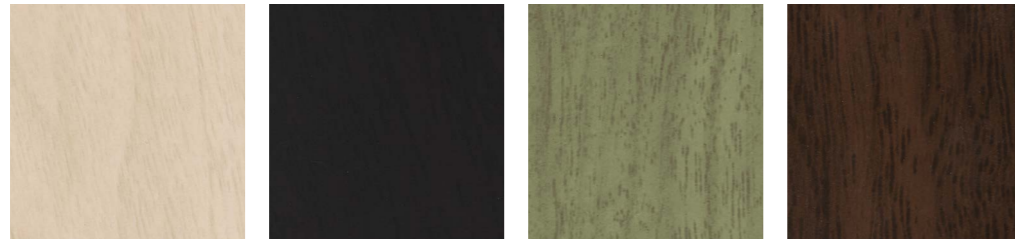
Composite material consisting of PVC (45%), PP (40%) and PES (5%), and constructed using a "Jacquard" double yarn in GG05 two-yarn, fit for out- and indoor use. The two united yarns create a "synthetic mesh" which is soft to the touch, with high technical qualities against microorganisms.



300/30 CHESNUT **300/31** BLACK **300/32** DARK GREY

ABS

ABS is a thermoplastic techno-polymer that, once stabilised, well resists even against UV radiation and is therefore suitable to outdoor use. It maintains strong mechanical features even at low temperatures and has high strength, impact and scratch resistance. These features make it ideal for use in a range of sectors, including furnishing.



23 WHITE

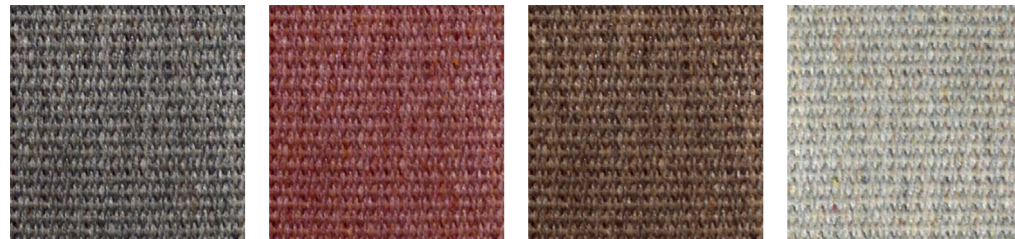
24 BLACK

37 GREY / GREEN

41 BROWN

BELTS

The straps consist of 90% Raytent recycled acrylic (55% recycled acrylic from the disposal of awnings, 45% virgin acrylic fibre), plus 10% recycled polyester. They offer an exceptional combination of durability and functionality; in fact, they are considered water-repellent thanks to special treatments and finishes, making them particularly suitable for use outdoors.



10 SLATE

50 BORDEAUX

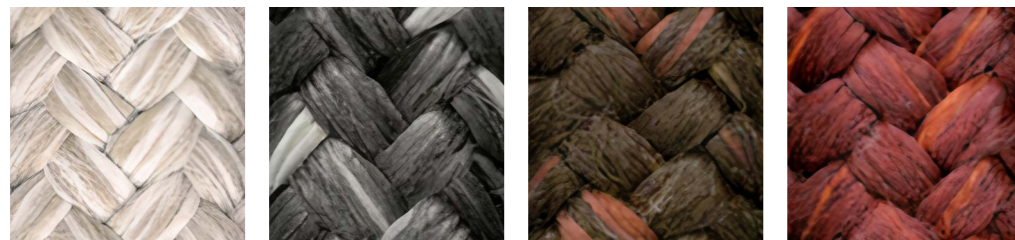
54 DARK BROWN

83 SMOKY GREY

SYNTHETIC ROPES

Double braid with polyester core and multifilament propylene covering. The external fibre is waterproof and resistant to UV rays.

ANTIGUA - NEF



91 WHITE

92 ANTHRACITE

93 BROWN

94 RED

PORCELAIN STONEWARE

Thanks to its excellent physical and mechanical properties, porcelain stoneware is ideal for outdoor use, since it is resistant to atmospheric corrosion and unaffected by UV exposure. Its qualities allow it to be water-and-oil repellent. Porcelain stoneware is obtained via the synthesizing process of ceramic clay, feldspar, kaolin and sand. These raw materials undergo grinding and atomization until a homogeneous particle size, suitable for pressing, is obtained. Firing takes place at 1150-1250°C for approx. 25-30 minutes in order to determine the ceramization of the mixture, ensuring the typical resistance to abrasion. The colors, veins and shadings of porcelain stoneware vary from piece to piece. Such difference indicates the plus value and the uniqueness of the product.



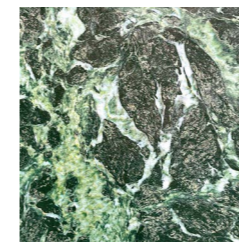
34 BASALTINA

35 STATUARIO WHITE

36 EMPERADOR

51 SALT

53 LEAD



59 ALPS GREEN

WOODS

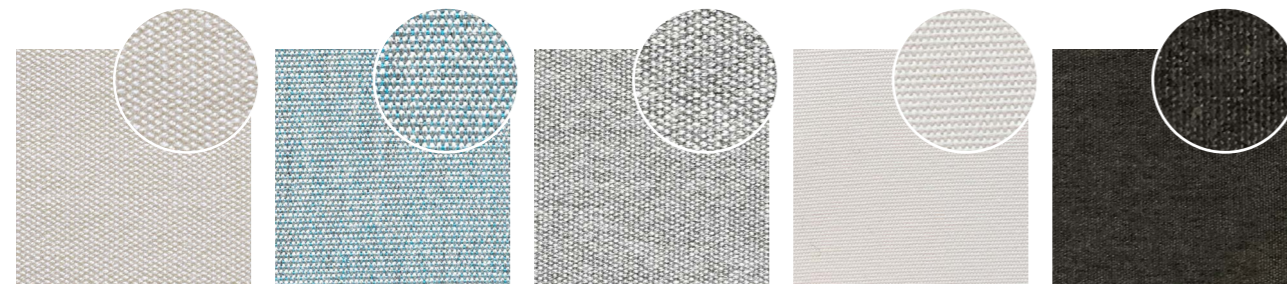
BEECH - Beech treated with a pigmented, water-based impregnating paint, with a water-based, transparent finish.
 USE AND MAINTENANCE - It is recommended to treat the beech with a silicon regenerating product every 3/5 months, available from hardware stores. Constant use of these regenerating products helps to slow down the natural ageing process of the wood.



71 BEECH

BASIC FABRICS

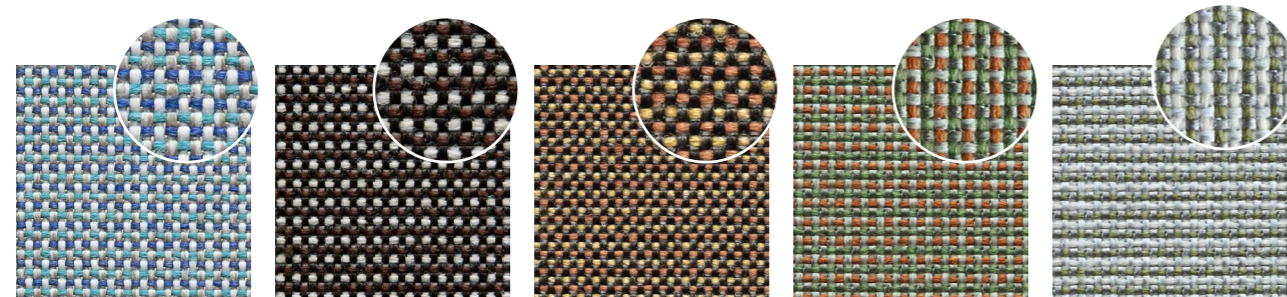
Acrylic fabric: a fibre whose base element is a polymer chain consisting of 85% acrylonitrile. Acrylic fibre combines the aesthetic qualities of a luxurious fabric with the texture and feel of wool with the functional qualities of resistance to the elements: UV resistant, it does not stain and does not rot upon contact with water as it is fast-drying.



700/4 ECRU 700/10 LIGHT BLUE 700/13 LIGHT GREY 700/32 WHITE 700/34 DARK GREY

STANDARD FABRICS

For information regarding the composition of fabrics in this range and their specific maintenance, please refer to the website www.emu.it, write to info@emu.it or contact the respective sales office.



900/02 SEA 900/05 BROWN 900/07 CHESNUT 900/08 SAND 900/09 SAGE

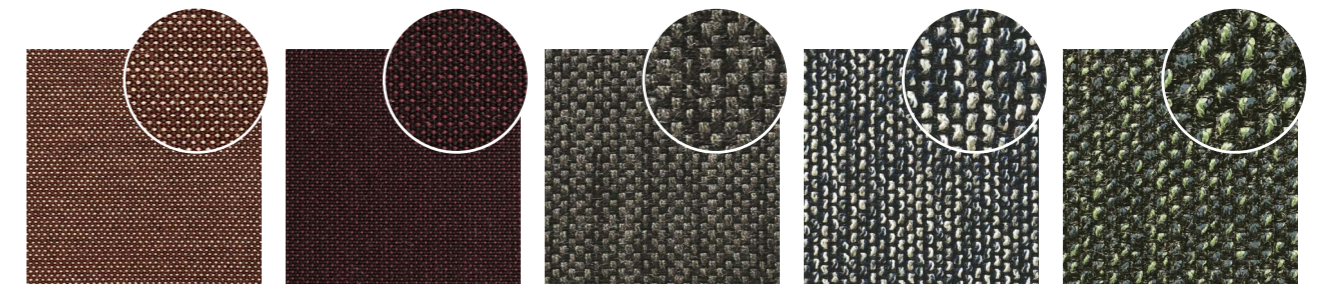


900/18 NACRE 900/71 WHITE 900/75 EBONY 900/77 GREY

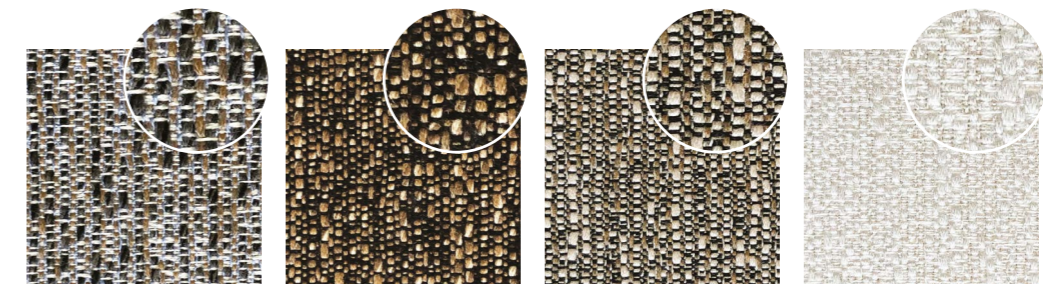
EXCLUSIVE FABRICS

For information regarding the composition of fabrics in this range and their specific maintenance, please refer to the website www.emu.it, write to info@emu.it or contact the respective sales office.

CAT. E



600/31 BRICK RED 600/32 MERLOT 600/33 CLASSIC 600/34 DENIM 600/35 LAGOON

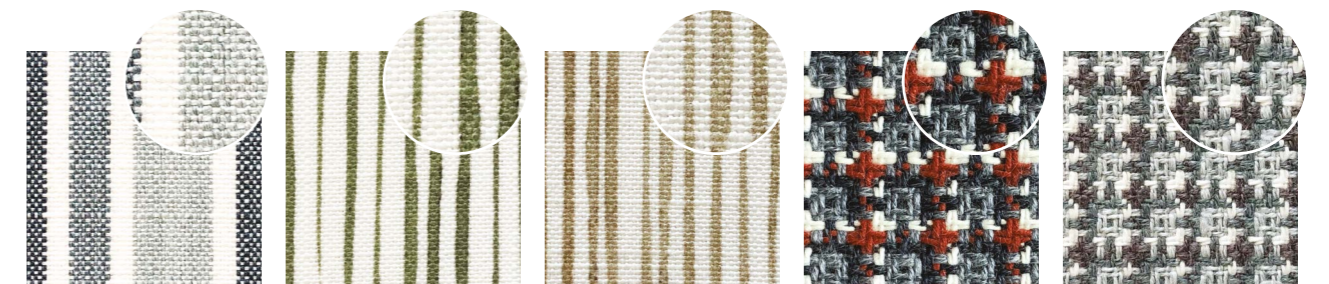


600/36 JOLLY 600/37 BARK 600/38 MUSLI 600/39 SWAN

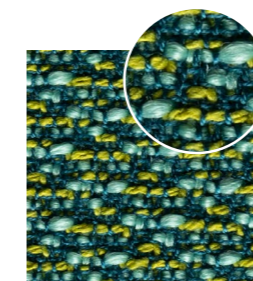
CAT. D



600/27 RASPBERRY 600/40 GOLD 600/41 BRONZE 600/42 GREEN 600/43 FRESH



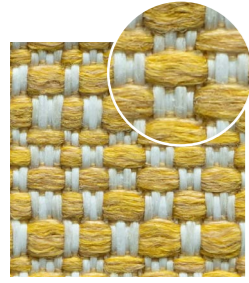
600/44 MARINE 600/45 GREEN STEM 600/46 TAUPE STEM 600/48 RED-BLUE KASIMIRO 600/49 LIGHT BLUE KASIMIRO



900/16 GREEN FAIRY

EXCLUSIVE FABRICS

CAT. C



600/07 YELLOW



600/14 ORANGE BURNT



600/16 SILVER BIRCH



600/18 FRESH AIR



600/47 WINE RED STRIPES

CAT. B

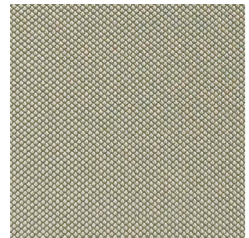


600/11 HONOLULU

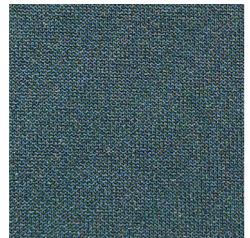
CONTRACT CUSHIONS FABRICS*

For information regarding the composition of fabrics in this range and their specific maintenance, please refer to the website www.emu.it, write to info@emu.it or contact the respective sales office.

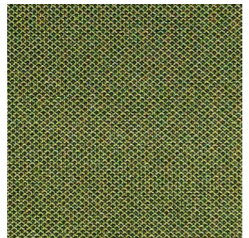
*WATER-REPELLENT fabrics



500/32 BEIGE



500/33 INDIGO



500/34 FOREST GREEN

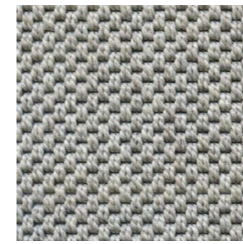


500/35 CHARCOAL

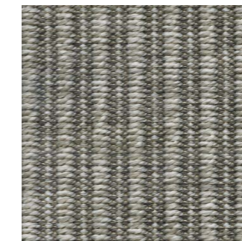


500/36 BROWN

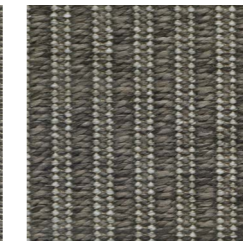
RUGS FABRICS



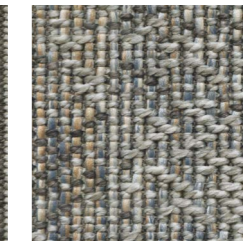
900/40 LIGHT GREY



900/41 GREIGE



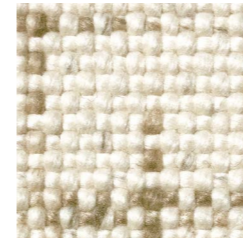
900/42 BROWN



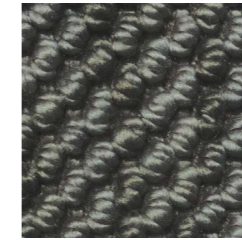
900/43 FANTASY



900/44 GREY



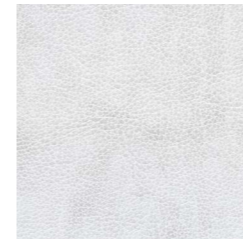
900/45 BEIGE



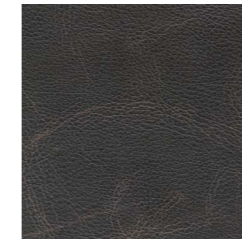
900/46 DARK GREY

ECO-LEATHER

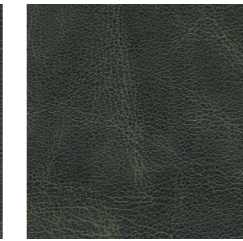
The eco-leather is made of compacted Nylon micro-fibre in polyurethane bath. It is then coated with polyurethane of the same color.



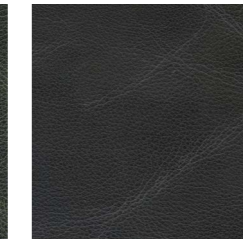
200/92 WHITE



200/93 BROWN



200/94 GREY / GREEN



200/95 BLACK

The products illustrated are subject to constant revisions in terms of their functional details and continuous research goes into the finishing treatments applied. The products presented in this publication, as well as the descriptions and the specifications given are illustrative and are subject to change by EMU Group S.p.A.

Non-contractual document

EMU Group S.p.A.
MARSCIANO, PERUGIA, ITALY / MAY 2026



Organizzazione con sistema di gestione della Qualità Certificato UNI EN ISO 9001:2015 da IMQ



Il marchio della
gestione forestale
responsabile

Richiedi i prodotti certificati FSC®
Look for our FSC® certified products

EMU.IT